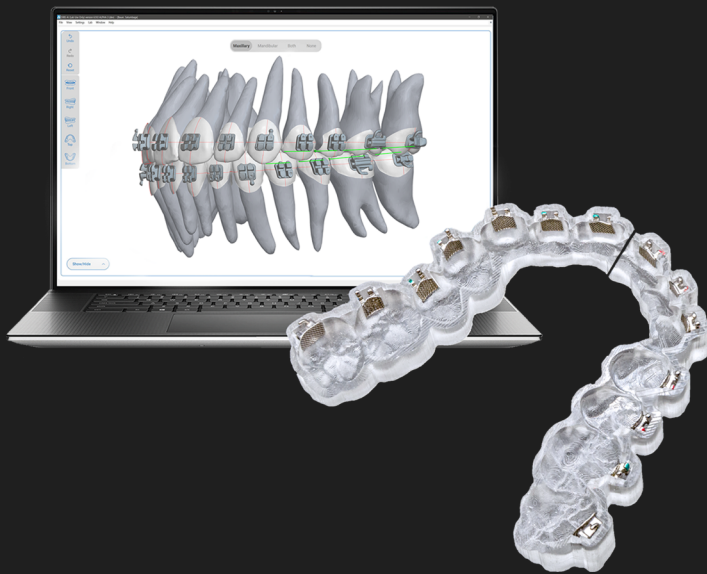


# DIBS Ai<sup>®</sup>

BY ORTHOSELECT



**CLINICAL TRAINING MANUAL**

# TRAINING LIBRARY

**TO ACCESS MORE  
RESOURCES ONLINE,  
PLEASE REFER TO OUR  
TRAINING LIBRARY.**



**TO SEE THE STEPS IN  
THIS GUIDE ANIMATED,  
WATCH THIS BONDING  
VIDEO.**



IF YOU HAVE ANY QUESTIONS, NEED CLARIFICATION, OR HAVE ANY ISSUES, PLEASE GIVE US A CALL AT +1 801-763-5039 OR TEXT US AT +1 385-610-1894



# BEFORE APPOINTMENT: QUALITY CHECK

1. Verify that the DIBS trays match the patient's name.
2. Verify that the correct brackets are properly inserted in the DIBS trays. Each bracket should fit snug into its designated bracket box. Turn the tray upside down and shake, no brackets should fall out.
3. Confirm bracket delivery before bonding date.

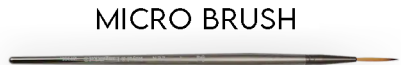


## SUPPLIES NEEDED FOR BONDING

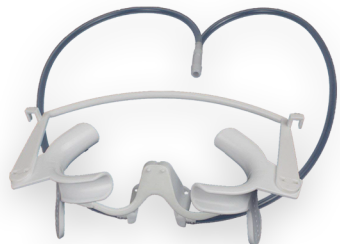


### Recommended Adhesives:

- Transbond XT (3M)
- LCR (Reliance)
- Goto (Reliance)
- Connect (GC)
- Brace Paste (AO)



### CHEEK RETRACTORS

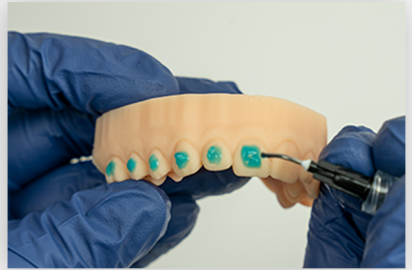




PLEASE BE AWARE OF THE STOP SIGNS THAT WILL INDICATE IMPORTANT TIPS THAT MANY DOCTORS AND THEIR STAFF HAVE HAD PROBLEMS WITH IN THE PAST.

## STEP 1: PREPARE TEETH

Prepare teeth with your regular procedure for applying pumice and etchant.



## STEP 2: APPLY + CURE PRIMER

Apply primer in the approximate area the bracket will be placed. Fully cure the primer after applying. Err on the side of over-curing the primer.

Caution: If air drying, high pressure air may displace the primer.



**Pro Tip:** Primer will stick to the tray! Avoid priming the interproximal spaces.

## STEP 3: APPLY ADHESIVE

Apply generously. It is better to have flash than debonds. Make sure the adhesive coats the entire bracket pad, reaching into all 4 corners to prevent debonds.

Posteriors generally require more adhesive.



**Pro Tip:** Work the adhesive into the bracket base mesh to insure the adhesive is fully incorporated. Missing this is the #1 cause of debonds.

## STEP 4: PLACING THE TRAYS

**Important:** Trays will come sectioned in thirds. We recommend bonding one section at a time. There is no particular order required when placing the tray sections over the teeth.



Once a section is seated over the teeth, press on the occlusal and facial side to ensure it is seated completely. Once seated, it is not necessary to maintain pressure.

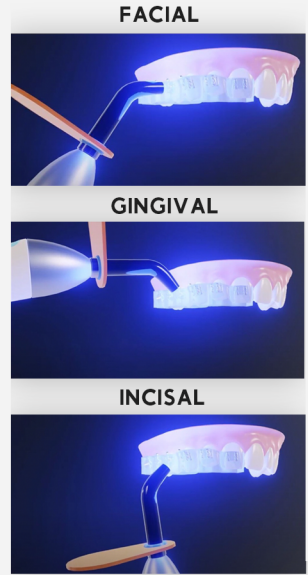
## STEP 5: LIGHT CURE

Once the tray section is securely in place, use your light curing unit to apply pressure on the bracket, which will push it against the tooth. This will ensure that no gaps exist between the bracket pad and the tooth.

Cure each bracket in 3 phases, for a total of 12 to 15 seconds.



**Pro Tip:** Because of the 3D printed tray material, light curing exposure on the adhesive is reduced *significantly*. It is better to over-cure if needed, to create stronger bonds. Always err on the side of over curing, as under curing can lead to debonds during removal.



## STEP 6: REMOVE THE TRAY(S)

Remove each tray section after light curing and before bonding the next section. The trays are easier to remove when they are warm.

To remove the tray, use a rounded carver to pull the tray from each bracket on the facial side, then tug between the interproximals of the teeth. Once the facial side is free, pull the tray off lingual to facial.



**Pro Tip:** Trays are heat sensitive and are softer and easier to remove when warm. For cases with curve of spee that require thicker trays, use the tray warmer for 20 seconds. Use the QR code on page 2 to buy one.

# PRO TIP SUMMARY



**Pro Tip:** Because of the 3D printed tray material, light curing exposure on the adhesive is reduced *significantly*. It is better to over-cure, if needed, to create stronger bonds. Always err on the side of over curing, as under curing can lead to debonds during removal.



**Pro Tip:** Trays are heat sensitive and are softer and easier to remove when warm. For cases with curve of spee that require thicker trays, use the tray warmer for 20 seconds, or use the QR code on page 2 to buy one.

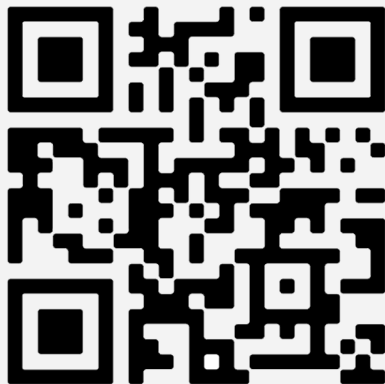


**Pro Tip:** Work the adhesive into the bracket base mesh. Missing this is the #1 cause of debonds.



**Pro Tip:** Primer will stick to the tray! Avoid priming the interproximal spaces.

## FOR ADDITIONAL SUPPORT VISIT THE SUPPORT WEBSITE



# CONTACT INFORMATION



## CUSTOMER SERVICE AND SUPPORT

Call us: +1 801-763-5039

Text us: +1 385-610-1894

### WEBSITE

[support.dibsai.com](https://support.dibsai.com)

### EMAIL ADDRESSES

[support@dibsai.com](mailto:support@dibsai.com)

### HOURS OF OPERATION

Monday - Friday

8:00 AM - 5:00 PM MST

### ADDRESS

831 E 340 S #170

American Fork, UT 84003

